

# Accu-Lube® Sawblade Applicator Nozzle

## FEATURES

- 9692 - Band Saw 'V' Nozzle is designed to point directly at the saw teeth to apply an even coat of lubricant to the blade
- 9696 - Band Saw 'N' Nozzle (for 1" to 1.375" blades) is a compact, easy to install design with an improved internal atomization design for better spray patterns
- 9877 - Band Saw 'RL' Nozzle (for blades up to 2.125") for larger blades that need the additional lube of a second pump - uses two inputs (pumps) but provides three fluid/air outlets
- 9878 - Circular Saw Angled 'C' Nozzle for blades up to 20" in diameter is a more compact design with improved atomization chamber for better spray patterns on circular saws
- 379165 - Circular Saw 'CM' Nozzle for blades from 20" to 36" - will require a two-pump applicator
- 9045 - Circular Saw 'CL' Nozzle for large blades from 30" up to 120" - will require a two-pump applicator

## APPLICATIONS

- All bandsaw and circular sawing applications where MQL lubrication is used. Permanent installation of nozzle is encouraged for optimal performance.

## DIRECTIONS

See Accu-Lube installation guide for optimal placement of sawblade nozzles

## HANDLING

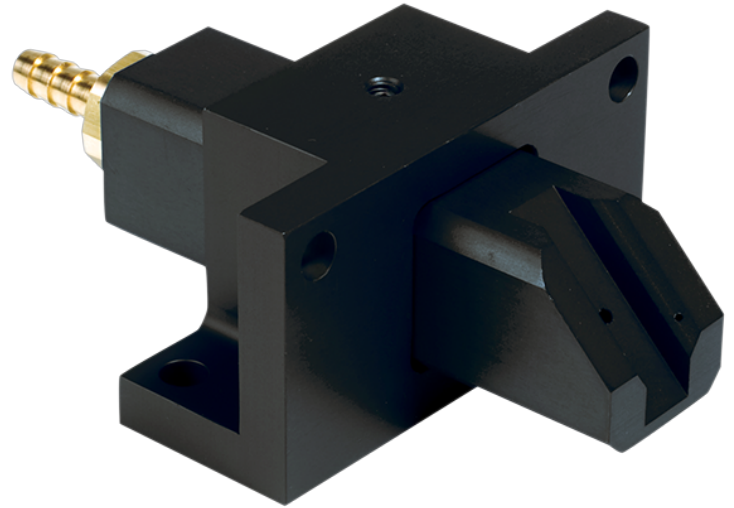
Follow standard industrial hygiene practices for handling metal parts and fittings.

## STORAGE

Keep in original packaging until ready to install to avoid losing/misplacing fittings or other parts.

## DISPOSAL

Dispose of in accordance with local regulations.



## AVAILABLE PRODUCTS

Part No.	Container Type
9692	V-Nozzle, 0.75-1.5" Wide
9696	N-Nozzle, 0.75-1.5" wide
9877	RL-Nozzle, up to 2" wide (needs 2 feeds)
9878	C-Nozzle, up to 20" (angled head)
379165	CM-Nozzle, 22-36" wide (needs 2-3 feeds)
9045	CL-Nozzle, 36-120" wide (needs 3 feeds)



**CONTACT YOUR ITW PRO BRANDS REPRESENTATIVE TODAY!**

800.241.8334 | [www.itwprobrands.com](http://www.itwprobrands.com)

LPS®, SCRUBS®, DYKEM®, Accu-Lube®, DYMON®, Spray Nine®, and Cedar® are registered trademarks and Rustlick™, Diamondkote™, and MetalMates™ are trademarks of Illinois Tool Works • All Rights Reserved